

## Top Stories This Week

- ≈ Tata-Singapore Airlines joint venture (JV): -JV formed to establish new airline in India -JV applied for Foreign Investment Promotion Board (FIPB) approval to set up new airline in India -New airline will be based out of New Delhi -New airline will operate under full service model -Tata Sons to hold 51 percent stake; Singapore Airlines to hold 49 percent.
- ≈ FIPB: -Clears proposals of HCL Technologies and Axis Bank to up FII investment limit -Clears HCL Tech's proposal to up FII investment limit -Okay's Axis Bank's proposal to up FII Investment limit to 62 percent from 49 percent.
- ≈ Fresh trouble for Ranbaxy , US Plant under FDA lens.
- ≈ Reliance Communications President CS Rao re-elected as AUSPI President.
- ≈ Tata Steel : -Announces new leadership structure -Appoints TV Narendran as MD- Designate, India & SE Asia -Appoints Koushik Chatterjee as Group Executive Director (Finance & Corporate) - New appointments effective from November 1 -TV Narendran to succeed HM Nerurkar as MD-India, SE Asia.

## Weekly Indices Change

Index	Close	P. Close	Chg. (%)
SENSEX	20263	19732	2.69
NIFTY	6012	5850	2.77
MIDCAP	5677	5629	0.85
SMLCAP	5485	5509	(0.44)
METAL	8659	8459	2.36
OIL&GAS	8750	8581	1.97
AUTO	11203	10943	2.38
TECK	4458	4421	0.84
BANKEK	12166	11589	4.98
IT	7810	7802	0.10
FMCG	7023	6714	4.60
HC	9327	9375	(0.51)
PSU	5704	5573	2.35
CD	5819	5749	1.22
POWER	1547	1514	2.18
CG	8071	8039	0.40
REALTY	1287	1318	(2.35)

## Global Indices

DOW	15451	15354	0.63
NASDAQ	3774	3710	1.73
FTSE	6611	6569	0.64
NIKKEI	14742	14404	2.35
HANGSENG	23502	22915	2.56

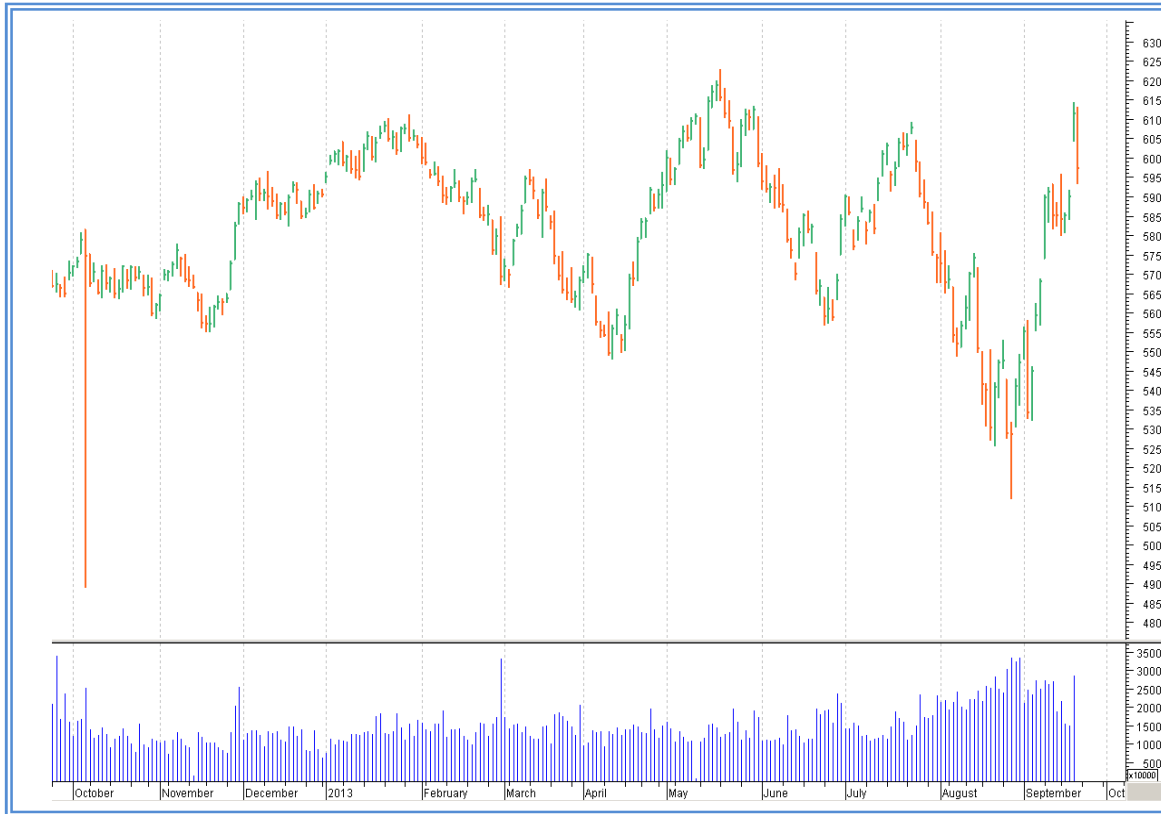
## Top Gainers Weekly

Scrip	Price	% Chg
TV18BROADCAST	22	26.78
GMRINFRA	21	20.01
YESBANK	356	17.44
JSWSTEEL	742	14.91
APOLLOTYRE	72	13.35

## Top Losers Weekly

Scrip	Price	% Chg
RANBAXY	333	25.79
GITANJALI	59	20.00
MUTHOOTFIN	99	19.55
WOCKPHARM	589	12.55
FRL	71	11.28

## Nifty Corner



<b>Support &amp; Resistance</b>						
<b>S3</b>	<b>S2</b>	<b>S1</b>	<b>Nifty</b>	<b>R1</b>	<b>R2</b>	<b>R3</b>
5850	5900	5950	6012	6150	6250	6350
<b>Moving Averages</b>						
<b>20DMA</b>	<b>50DMA</b>	<b>100DMA</b>	<b>200DMA</b>			
5480	5705	5810	5835			

## Market Commentary

During the week Both Nifty and Sensex gained over 2.5%. Market seen some selling after the RBI policy on Friday results hike of 0.25 bps in repo rate. Banking index was the highest gainer during the week closed with the gain of 5%. Selling seen in Reality and some of healthcare sectors. For the next week Nifty likely to trade in the range between 6150 - 6300 in the upper side and 5900 - 5850 in the lower side.

Stocks at 52 wk High

Scrip	Cmp
CMAHENDRA	211
DRREADY	2366
RCOM	156
TATAMOTORS	338
LAOPALA	495

Stocks at 52 wk Low

Scrip	Cmp
HOTELEELA	14
PARSVNATH	26
FIRSLTEASE	19
INDIAGLYCO	85
REPRO	129

FII Activity

Date	Figures in crore
16/09	282.87
17/09	318.05
18/09	580.13
19/09	3543.84
20/09	945.76
NET	5670.65

DII Activity

Date	Figures in crore
16/09	-425.17
17/09	-501.19
18/09	-508.41
19/09	-1829.72
20/09	-790.22
NET	-4054.71

Weekly Stock Idea

Scrip	B/S	Cmp	Tgt
ADANIENT	B	151	170
NMDC	B	123	135
SAIL	B	52	57
DISHTV	B	49	54
JSWENERGY	B	45	49

Buy on dips & Sell on rise with Stop-loss of 3%

Volume Breakout Stocks

Scrip	Cmp
BFUTILITIE	148
EVEREADY	20
SUNPHARMA	566
HANUNG	26
BEL	1084

Week Ahead**BOARD MEETING THIS WEEK:**

**24 SEPT:** AIAENG: To consider a proposal for the Amalgamation of DCPL Foundries Limited, a Wholly-owned Subsidiary of the Company with the Company and to approve the draft Scheme of Amalgamation

**VISIT US AT: [WWW.INDIRATRADE.COM](http://WWW.INDIRATRADE.COM)**

**Disclaimer**

This report is for private circulation within the Indira Group. This report is strictly confidential and for information of the selected recipient only and may not be altered in any way, transmitted to, copied or distributed, in part or in whole, to any other person or to the media or reproduced in any form. This report should not be construed as an offer or solicitation to buy or sell any securities or any interest in securities. It does not constitute a personal recommendation or take into account the particular investment objectives, financial situations, or any such factor. The information, opinions estimates and forecasts contained here have been obtained from, or are based upon, sources we believe to be reliable, but no representation of warranty, express or implied, is made by us to their accuracy or completeness. Opinions expressed are our current opinions as of the date appearing on this material only and are subject to change without notice.